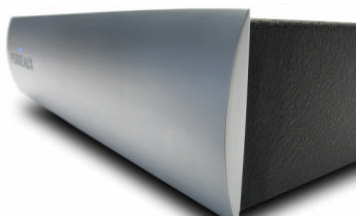
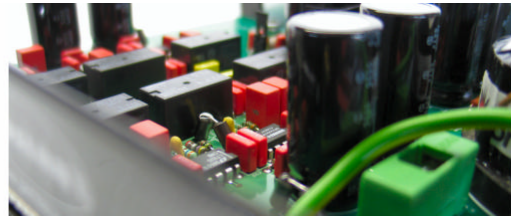


# Silhouette Series SXV2 Phono Preamplifier



## Your distributor is:

The Silhouette Series **SXV2** is a precision phono preamplifier. Featuring separate low-noise input stages, one tailored specifically for moving coil (MC) cartridges the other for moving magnet (MM), the **SXV2** provides the best possible performance for any cartridge. Matching the **SXV2** to the cartridge couldn't be simpler, adjusting load resistance, load capacitance, gain and RIAA curve via the external DIP switches. As with all Perreaux products, the **SXV2** features the finest audiophile grade components. The styling of the **SXV2** is subtle and discreet, allowing seamless integration into existing systems or the perfect compliment to other products from the Perreaux range.

- Highly flexible
- Separate low-noise input stages
- Low noise floor
- Excellent crosstalk performance
- Optimal circuit and ground layout for improved noise floor and channel separation
- Extensive EMI and RFI filtering
- Compact
- Adjustable gain
- Selectable Normal and IEC RIAA curves
- Enhanced audio design
- Adjustable load impedance and load capacitance
- Moving magnet (MM) and moving coil (MC) compatible
- Stylish



**Rated output:** 0.75V<sub>RMS</sub>

**Sensitivity:** 0.24mV to 7.5mV

**Gain:** 40dB to 70dB

**Input overload margin:** 20dB

**Load impedance:** 10 to 47k Ohms

**Load capacitance:** 27pF to 417pF

**Total harmonic distortion:**

typically 0.002% @ 1kHz  
20Hz–20kHz <0.01%

**Signal to noise ratio:** 85dB (*unweighted*)

**RIAA equalisation:** IEC or Normal

**RIAA accuracy:** 20Hz-20kHz ±0.5dB

**Output impedance:** 27 Ohms

**Audio connections:**

1 pair RCA inputs  
1 pair RCA line-outs

**Dimensions:**

Width: 216mm (8.5")  
Height: 58mm (2.3")  
Depth: 168mm (6.6")

**Net weight:** 1.5kg (3.3lb)

For more details please visit our website:

[www.perreaux.com](http://www.perreaux.com)

